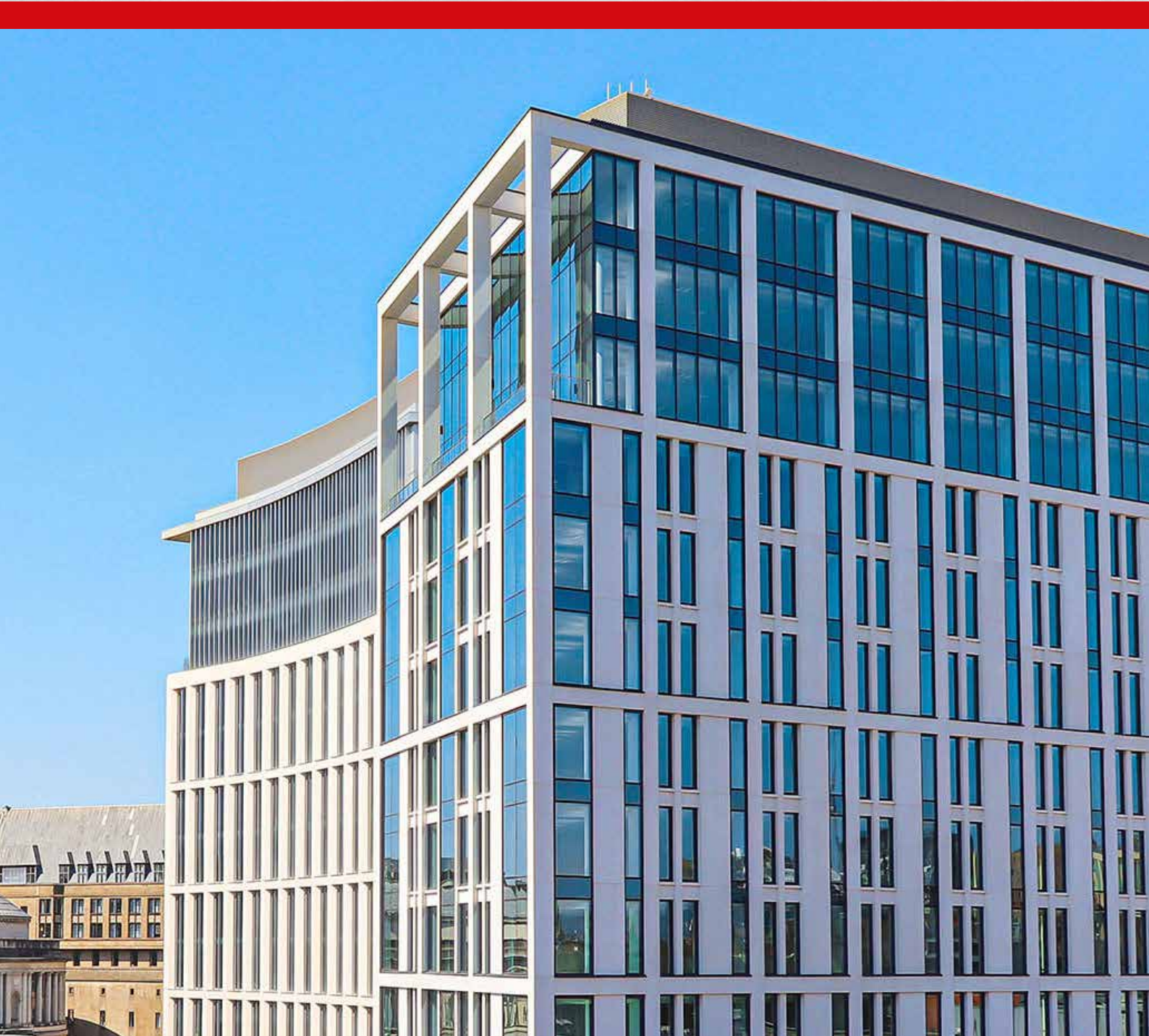


eltherington architectural

Rainscreen cladding systems



eltherington
architectural solutions



eltheringtonarchitectural.co.uk



eltherington architectural solutions

About us

Established over 60 years ago, Eltherington remain at the forefront of innovation and performance in terms of design and manufacture of architectural rainscreen façades.

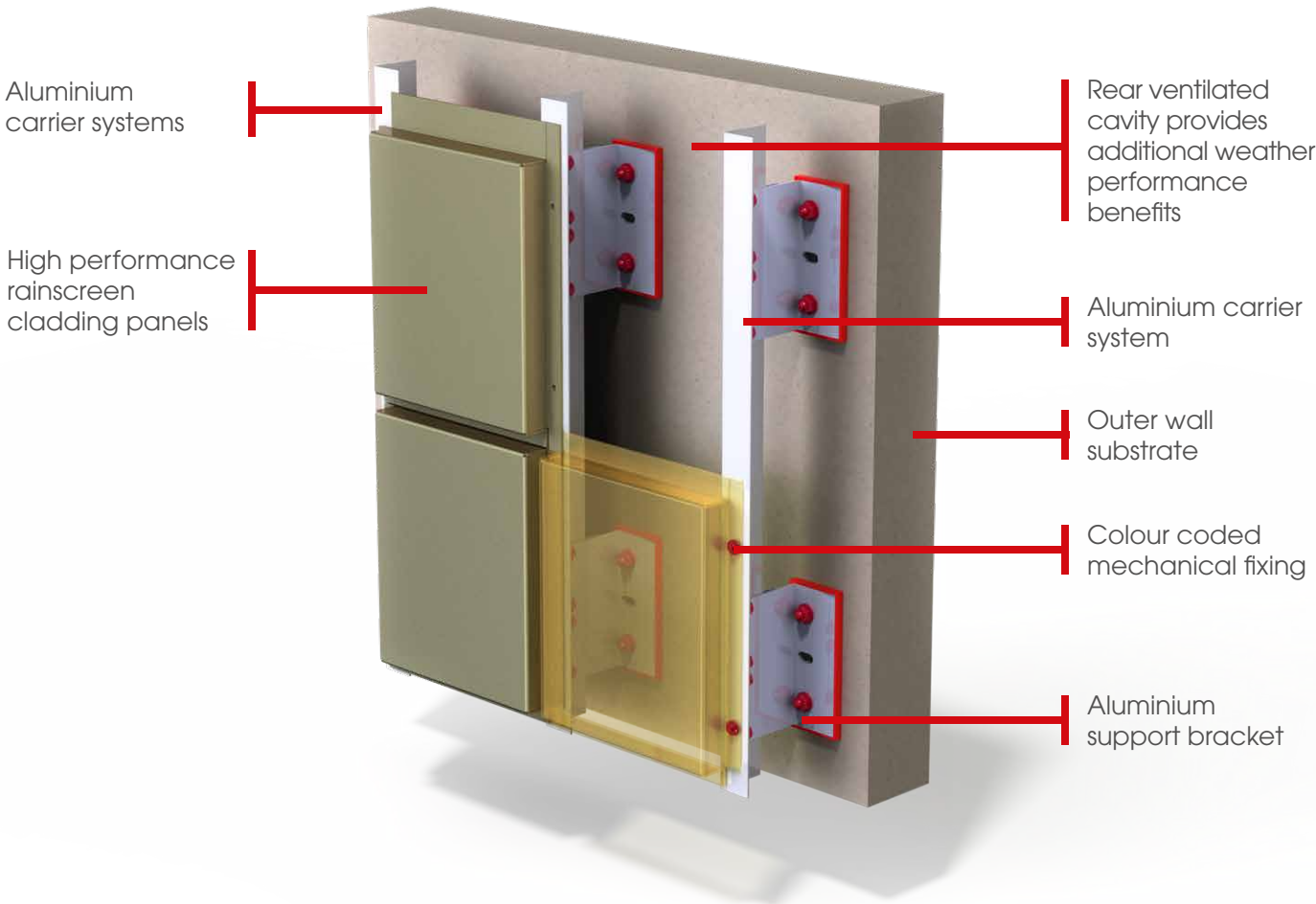
We offer a fully tested range of rainscreen systems in an extensive choice of materials and finishes to help you bring your design to life.

Contents

Systems	
TFS1 - through fix system	4
SFS1 - secret fix system	6
CPS - clip plank system	8
IPS - interlocking plank system	10
EPS - extruded plank system	12
CS - castellation system	14
Hilti - Eltherington support system	16
Materials	
Aluminium	18
ACM	18
Steel	19
Cor-ten steel	19
Finishes	
PPC	20
CoreClad A1	20
Anodised	21
Brushed aluminium	21
Perforated	22
Embossed	22
Rimex steel	23
Geometric plank	23
Architect and Installer	
CWCT	24
ISO	24
News & downloads	24
EN 13501-1 standards	25

Systems

TFS1 - through fix system



Specification

- Panel fire rating - A1 or A2
- Finish - PPC, Pre-paint, Anodised, Corten, Rimex
- Thickness - 2 / 3mm
- Panel size - 1480 x 3850mm max
- Horizontal joint - 20mm
- Fixings - Self drill mechanical fixings
- Rail centres - 600mm max
- Install method - 1st & 2nd fix layout
- CWCT tested with Hilti-Eurofox

TFS1 - case studies

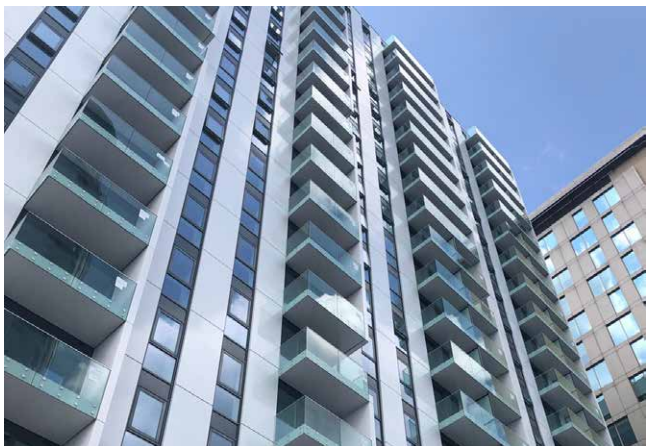
Hilton Doubletree

- 2mm aluminium
- Hilti subframe
- PPC finish
- 400m²
- Architect - Aros Architects



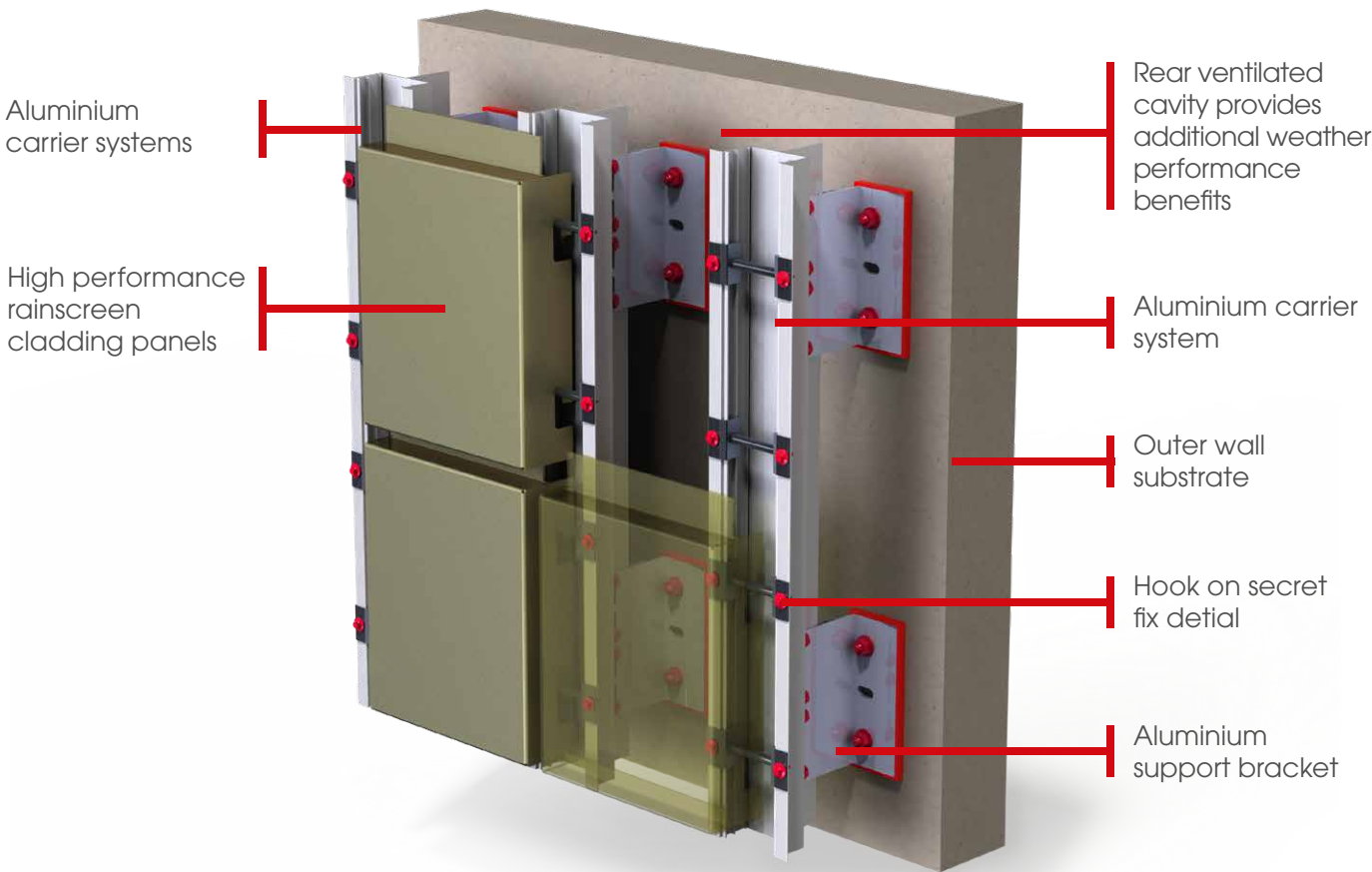
Media City UK

- 3mm aluminium
- Hilti subframe
- PPC, class 2, Florida spec finish
- 10,000m²
- Architect - AHR Architects



Systems

SFS1 - secret fix system



Specification

- Panel fire rating - A1 or A2
- Finish - PPC, Pre-paint, Anodised, Corten, Rimex
- Thickness - 2 / 3mm
- Panel size - 1480 x 3850mm max
- Horizontal joint - 20mm
- Fixings - Self drill mechanical fixing
- Rail centres - 750mm max
- Install method - 1st & 2nd fix layout
- CWCT tested with Hilti-Eurofox

SFS1 - case studies

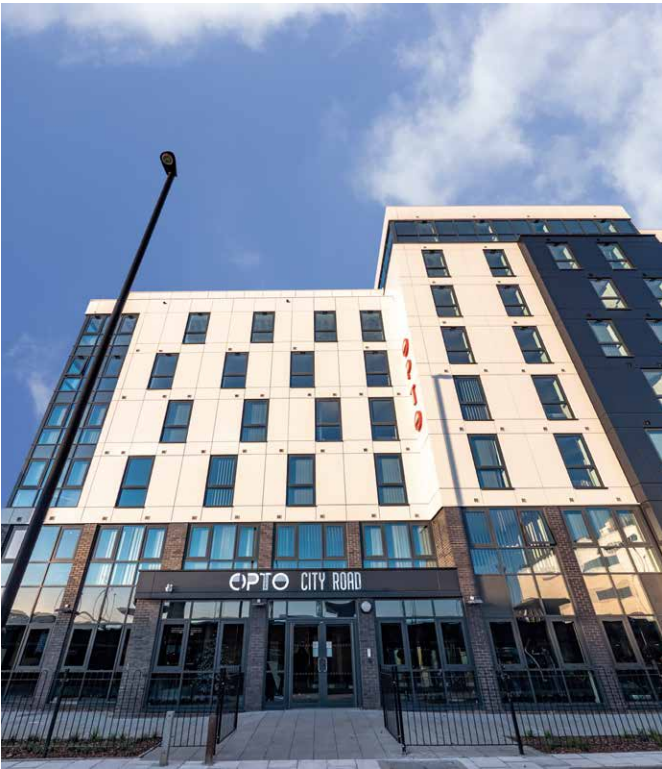
Bridgewater Place

- 3mm aluminium
- Hilti subframe
- Anodised natural silver
- 3,000m²
- Architect - Aedas Architects



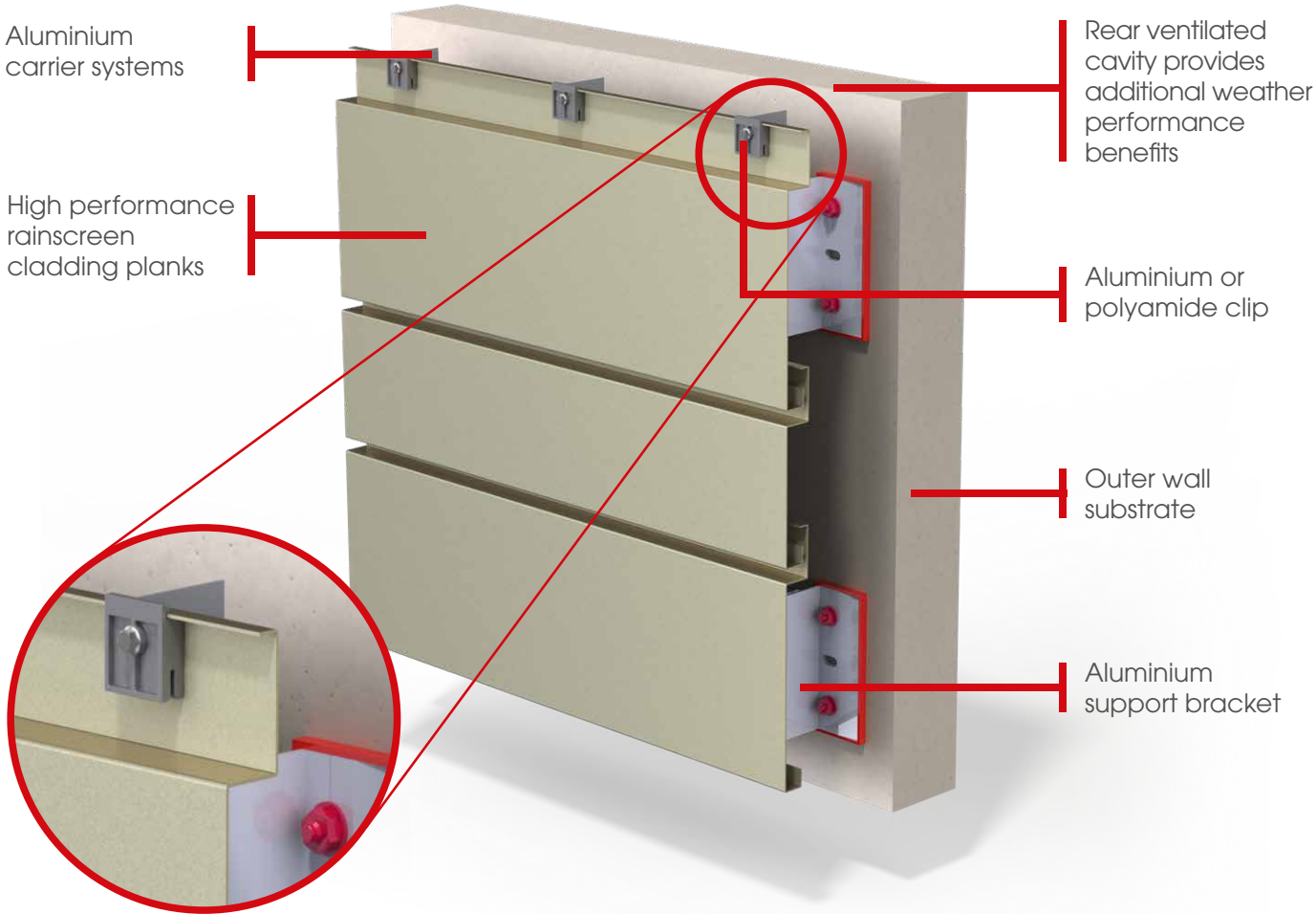
Opto Newcastle

- 3mm aluminium
- Hilti subframe
- PPC finish
- 2,500m²
- KDP Architects



Systems

CPS - clip plank system



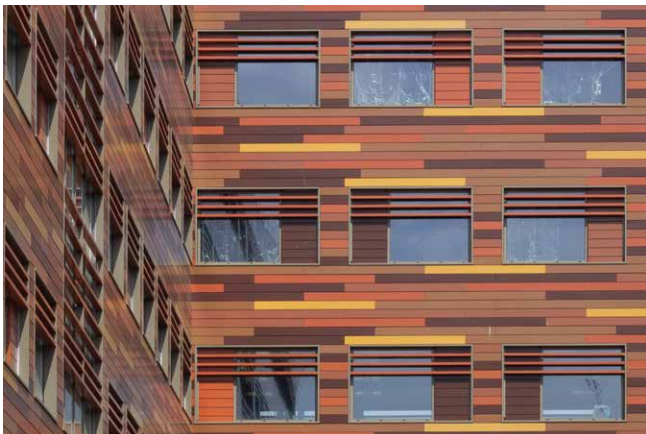
Specification

- Panel fire rating - A1 or A2
- Finish - PPC, Pre-paint, Anodised Corten, Rimex
- Thickness: 1 / 1.2 / 1.5 / 2mm
- Face height - 150mm to 450mm
- Face length - 6400mm max
- Horizontal joint - 10mm to 20mm
- Vertical joint - Open, closed return or butt strap
- Clip fixings - Self drill mechanical fix
- Fixing centres - 750mm max
- Install method - Bottom > up
- CWCT tested with Hilti-Eurofox

CPS - case study

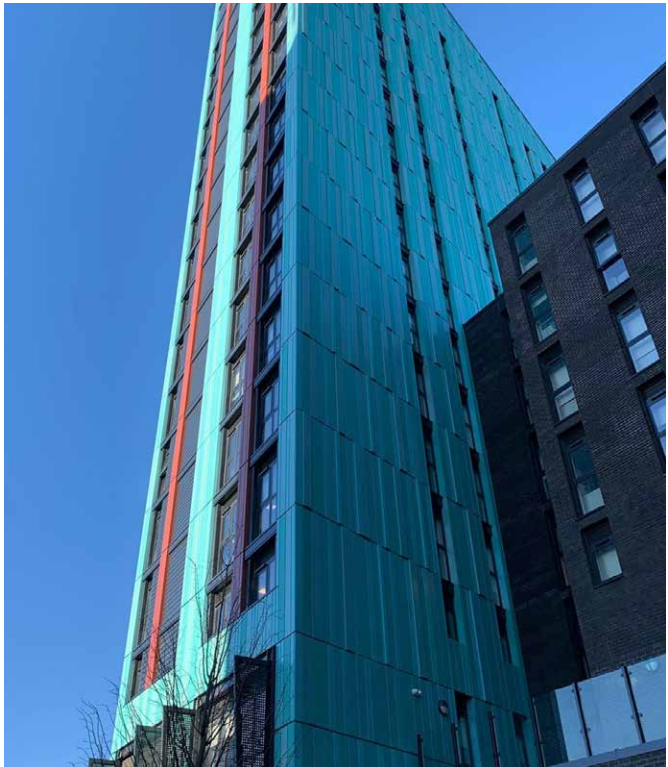
Jesmond 360

- 1.5mm aluminium
- Hilti subframe
- PPC finish
- 2,000m²
- Architect - GT3 Architects



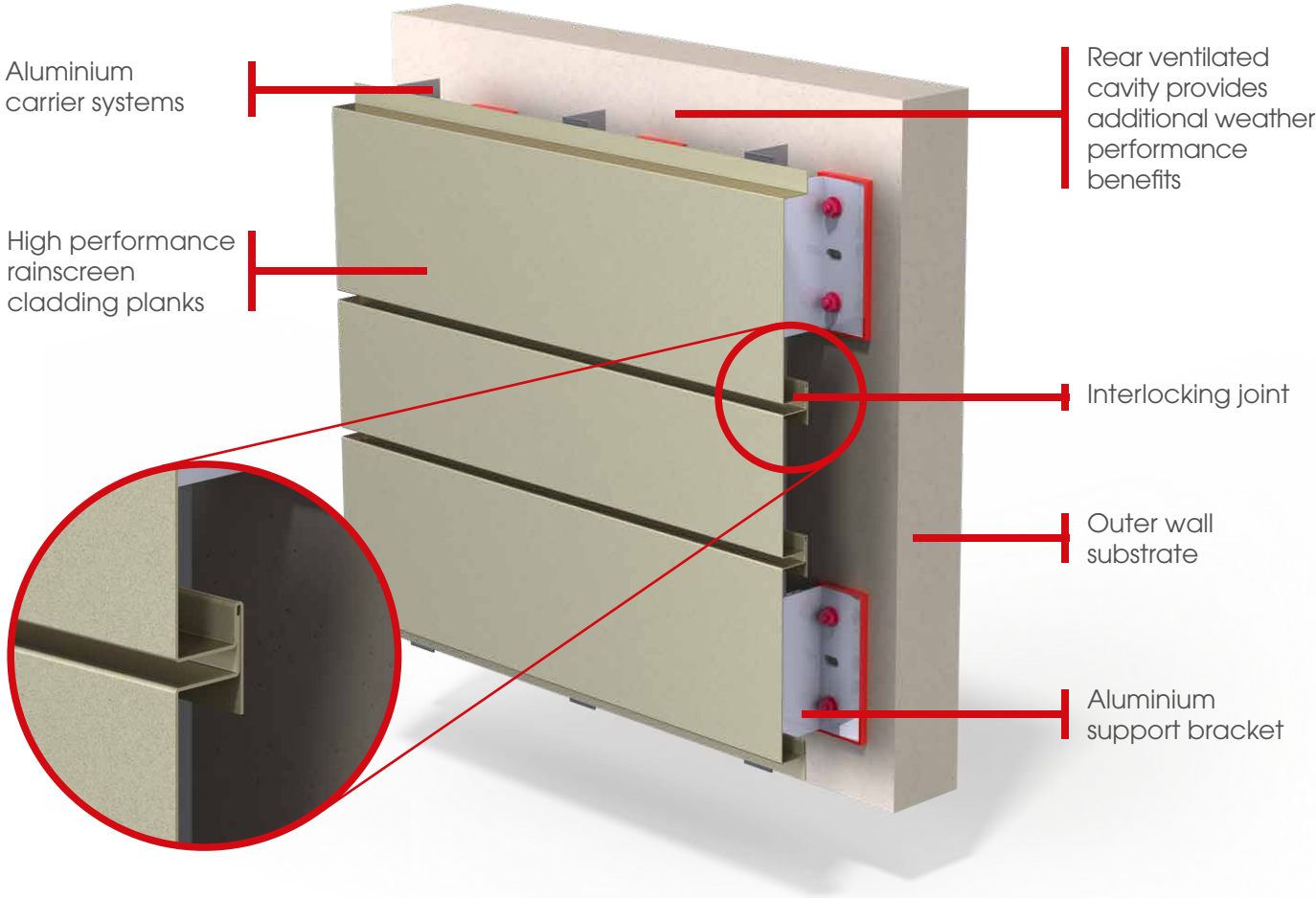
Swansea Fusion

- 2mm aluminium
- Hilti subframe
- Pre-paint finish
- 7,000m²
- Architect - Corstorphine & Wright



Systems

IPS - interlocking plank system



Specification

- Panel fire rating - A1 or A2
- Finish - PPC, Pre-paint, Corten, Rimex
- Thickness - 1 / 1.2 / 1.5mm
- Face Height - 150 to 350mm
- Face length - 6400mm max
- Horizontal joint - 10 – 20mm
- Vertical joint - Open, closed return or butt strap
- Fixings - Self drill mechanical fix
- Rail centres - 750mm
- Install method - Top > down
- CWCT tested with Hilti-Eurofox

IPS - case study

Haggerston London

- 2mm aluminium
- Hilti subframe
- PPC finish
- 1,500m²
- Architect - PRP Architects



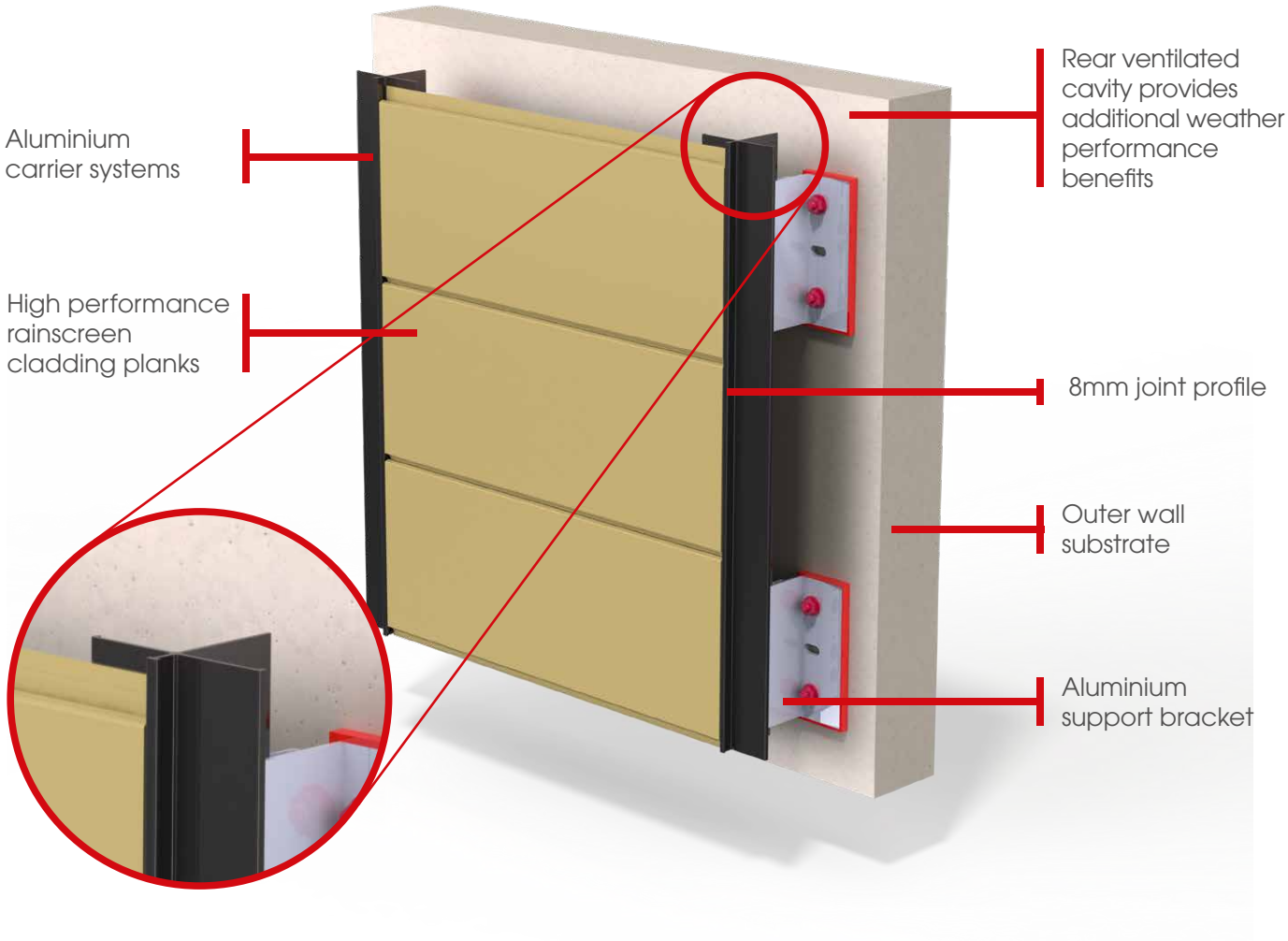
Brookfield Retail Park

- 1.5mm aluminium
- Hilti subframe
- PPC finish
- 4,000m²
- Architect - Pinnacle Architecture Ltd



Systems

EPS - extruded plank system



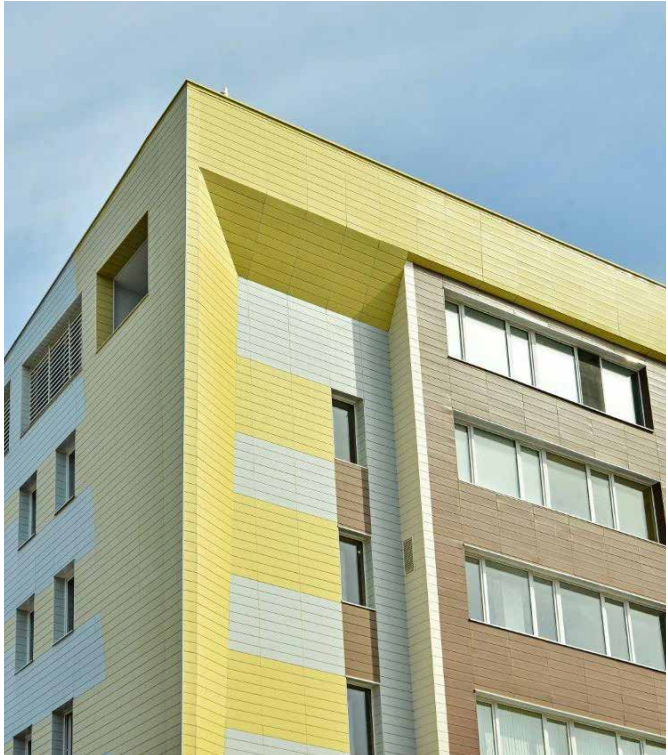
Specification

- Material - Aluminium
- Finish - PPC, Anodised
- Thickness - 2mm
- Face Height - 210mm only
- Face length - 6010mm max
- Horizontal joint - 8mm
- Vertical joint - Open or 8mm T profile
- Fixings - Self drill mechanical fix
- Fixing centres - 750mm max
- Install method - Bottom > up
- CWCT tested with Hilti-Eurofox

EPS - case study

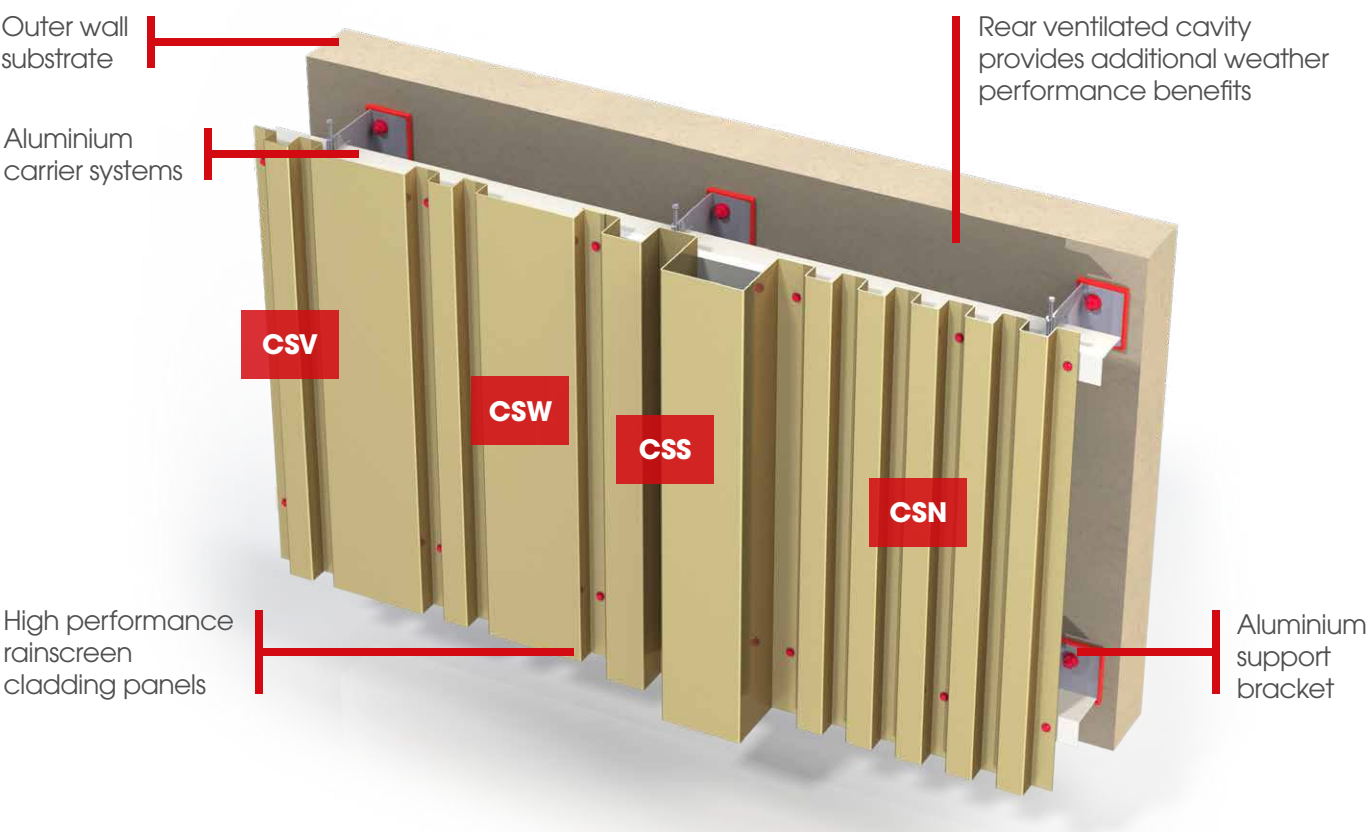
Burgas city high school

- 2mm aluminium
- Bespoke subframe
- PPC finish
- 4,500m²
- Architect - Todorov Architects



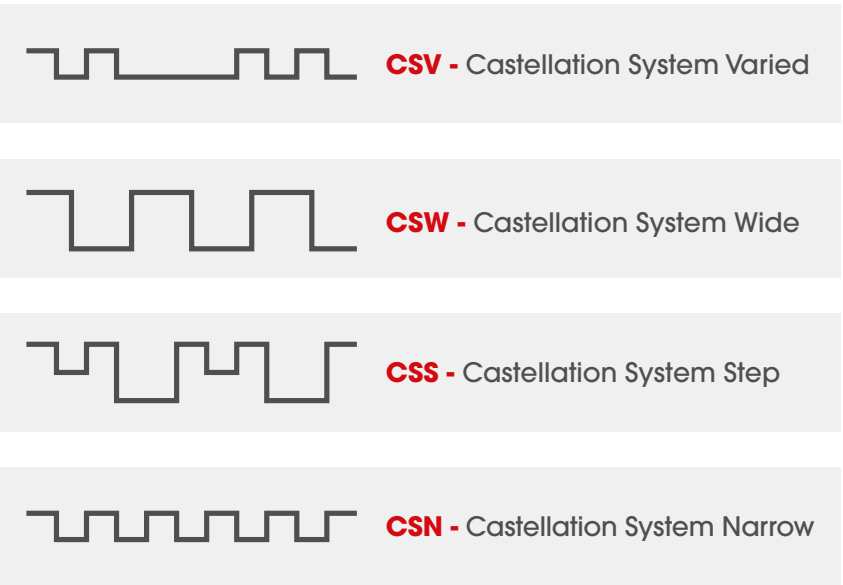
Systems

CS - castellation system



Specification

- Panel fire rating - A1 or A2
- Finish - PPC, Pre-Paint, Anodised, Corten and Rimex
- Plank Lengths 6400mm max (dependant material availability)
Horizontal Joint - Open or Butt strap
- Thickness - Max of 2mm
- Fixing - Self Drill mechanical fix
- Fixing centres - 300mm max
- Install method - Overlap right over left or vice versa
- CWCT tested with Hilti-Eurofox



CS - case study

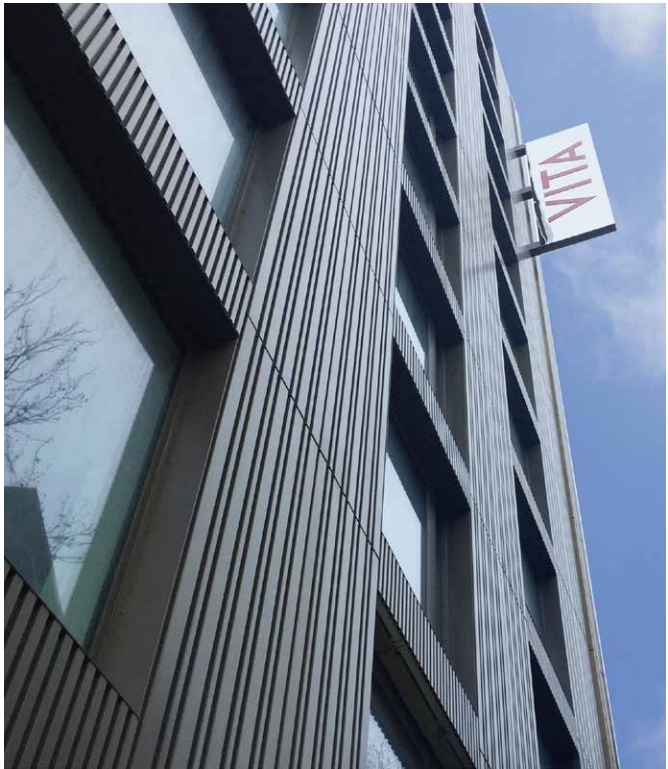
Circle Square, Manchester

- 2mm aluminium
- Bespoke subframe
- PPC finish
- 2,500m²
- Architect - Feilden Clegg Bradley Studios



St Albans Leeds

- 2mm aluminium
- CSN and CSV systems
- PPC finish
- 400m²
- Architect - FCB Studios



Support Systems

Hilti - eltherington



Design →

Measure →

Brackets →

Fixing brackets →

The complete rainscreen solution

At Eltherington, we offer a fully tested range of façade system solutions, along with technical and engineering support from Hilti, our preferred supplier. See the diagram below to find out how we work with Hilti to support our projects.

With solutions for both horizontal and vertical applications, our systems include all fixings, fastenings and support structures, as well as nationwide on site support from the Hilti Building Envelope Specialists team.

In addition to this, we can also provide Hilti Fox-T bracket systems; a thermal bridge free façade solution to help achieve higher U-Values.

Mounting insulation →

Firestop →

Profiles and alignment →

Rainscreen cladding ●

Application

Application

aluminium



About aluminium

Aluminium, while it has a relatively high initial energy cost, offers unparalleled manufacturing flexibility, the broadest range of finishes, an excellent strength-to-weight ratio, unlimited recyclables, and has a far better environmental profile than many specifiers believe. Above all, it offers architects the most elegant and satisfying design solutions.

ACM

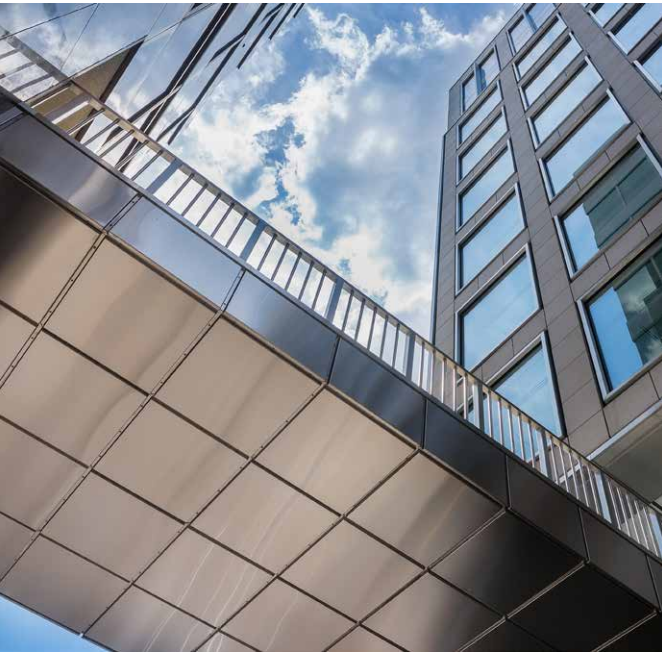
(Aluminium Composite)



About ACM

Aluminium Composite Material (ACM) is the material of choice when panel flatness and a high performance finish are a must. Made from two sheets of 0.5mm aluminium, bonded to 3mm, fire rated A1 or A2 core. This simple concept gives a wide variety of advantages for both architects and installers. It is stable, yet readily mouldable, extremely weather resistant, and very easy to install.

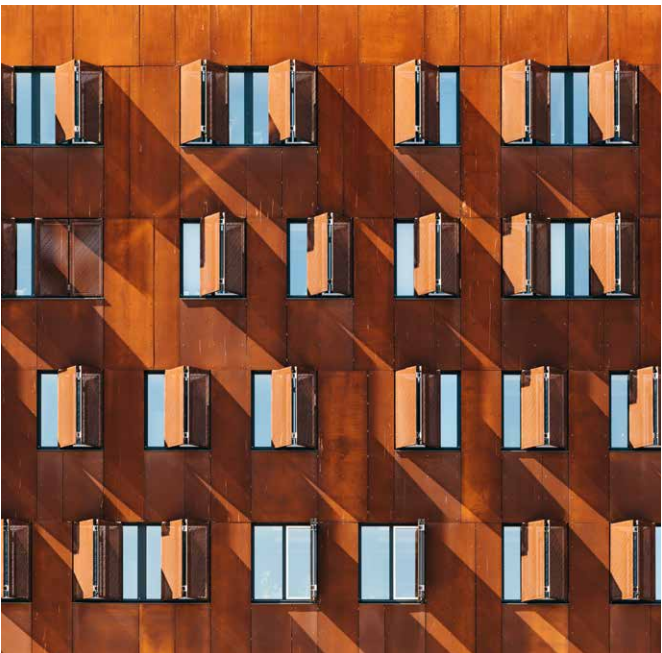
stainless steel



About stainless steel

Stainless steel is one of the most durable materials used in architecture. However stainless steel is not just one material; there are many different types with different properties and, most importantly, different levels of corrosion resistance.

cor-ten steel



About cor-ten steel

COR-TEN steel or weathering steel is a group of steel alloys which were developed to eliminate the need for painting, and form a stable rust-like appearance after several years exposure to weather.

The protective layer develops within 12-36 months under normal atmospheric conditions in which the steel surface is exposed to cycles of wet and dry conditions. The appearance changes throughout the oxidation period from a reddish brown to a dark brown, and the rust creates a protective coating that constantly forms, allowing the material to self heal.

Finishes

PPC (Polyester powder coating)



About PPC

Powder coating is a type of coating that is applied as a free-flowing, dry powder. The main difference between a conventional liquid paint and a powder coating is that the powder coating does not require a solvent to keep the binder and filler parts in a liquid suspension form. The coating is typically applied electrostatically and is then cured under heat to allow it to flow and form a “skin”. Available in any RAL, Matt, satin or gloss finish. Our approved applicators use the following products: Syntha Pulvin, Akzo Nobel and Interpon.

CORECLAD® A1 (Prepainted)



About CoreClad A1

CoreClad A1 is the Eltherington range of unique pre-coated aluminium material finishes which are produced through a coil coating process. The process is continuous and highly automated providing advantages of superior quality, uniform paint layer and consistent colour. CoreClad A1 material have optimal cleaning, pre-treatment and paint application facilities, leading to unquestionable advantages in corrosion resistance, durability and sustainability. CoreClad A1 is A1 fire rated, 25% stronger than traditional PPC aluminium material and we are able offer a 30 year warranty.

Finishes

anodised



About anodised

The aluminium is anodised by the passing of an electrical current from the anode to the cathode. The item to be anodised becomes the anode part of the electrical circuit whilst the cathodes are already in the anodising tank. The electrical current causes oxygen to be released at the anode which combines with the aluminium to form the aluminium oxide which is the anodic film. The depth of the anodic film and colour dyeing is determined by the time in the anodising tank; usually between 15 to 60 minutes creating an anodic film thickness of between 5 and 25 microns.

brushed aluminium



About brushed aluminium

Aluminium has a natural beauty and lustre. Its surface can be treated in various ways to produce different effects. A brushed finish can be achieved by polishing the aluminium with grinding belts. The 3 most common brushed finishes we offer are 240 grit dull polish, satin brush, and bright polish. Alternatively, we can offer pre painted finishes which provide a great alternative to real brushed surfaces.

Finishes

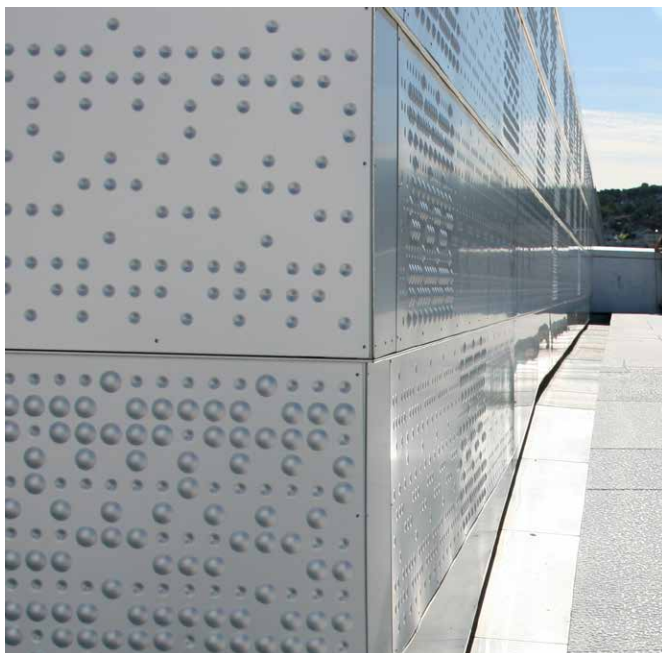
perforated



About perforated

Building on our experience in working with architects and designers, Eltherington offers an extensive range of precision perforated fascia and panel solutions. Our highly experienced team are able to work with customers to create bespoke designs that meet project requirements. We manufacture all our perforated solutions in-house using state-of-the-art production equipment. Functional and decorative, our perforated panels add a contemporary aesthetic to any project.

embossed



About embossed

We are able to offer a range of embossed finish options to provide many unique and innovative creative solutions. Within our CNC punch facility, we have numerous punch tools for embossed designs, either convex or concave. We are also able to offer full panel embossed solutions resulting from coil processing. We have the following emboss patterns: Stucco, Hammered, Cedar Woodgrain, and Alugrain. An additional benefit of embossing is the material work hardening properties resulting from the embossing process to provide a much stronger panel solution.

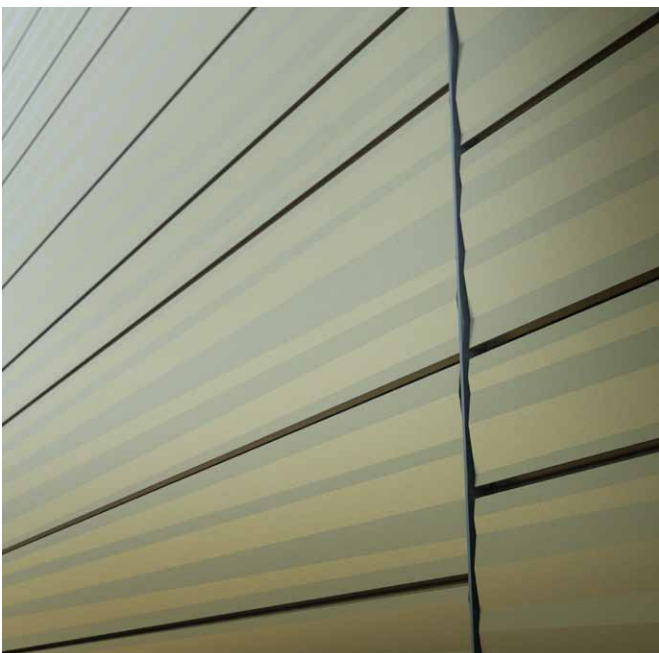
rimex steel



About Rimex steel

Rimex’s metal finishes include patterned / textured cold rolled finishes, Linen, Squares, Treadtex Treadplate, coloured stainless steel, vibration polishes, bead blast finishes and etched finishes.

geometric plank



About geometric plank

Geometric plank is a folded geometric faced metal plank that is secretly fixed on the plank returns with our aluminium or polyamide clips. This engineered system allows for a larger plank face and joint detail resulting in a striking and bespoke linear design.

The Geometric plank is a bottom to top system when installed horizontally, meaning the install starts at the bottom of the elevation and each plank locks into the clip below.

Our horizontal and vertical Hilti-Eurofox subframe will accommodate the planks being installed in any orientation whilst applying the same clip fixing method.

Architect and Installers

CWCT



About CWCT

Eltherington is a member of The Centre for Window and Cladding Technology (CWCT). The CWCT is a leading provider of information to everyone involved in the design, specification, or installation of building envelopes.

CWCT sets the industry standard in the UK for high specification architectural projects. Eltherington rainscreen cladding solutions have been independently tested and accredited to the specific requirements of CWCT.

News & document downloads

We produce a monthly newsletter that includes our latest case studies and products.

If you would like to receive the newsletter please email us at info@eltherington.co.uk or subscribe on our website.

All our specification and technical guides are available on our download page at eltheringtonarchitectural.co.uk/downloads

ISO

Quality ISO 9001

ISO 9001 is a standard of requirements against which our Quality Management System is evaluated. We are actively advertising our company's commitment to quality, traceability, continual improvement and customer satisfaction.

Environmental ISO 14001

ISO 14001 environmental management system indicates to our stakeholders and customers that this business is committed to reducing our environmental impact, as well as reducing costs associated with waste management.

Health & safety ISO 45001

ISOHAS 45001 is a standard of requirements against which our Health & Safety Management System can be evaluated. We are required to identify the risks associated with our operations and mitigate their impact.

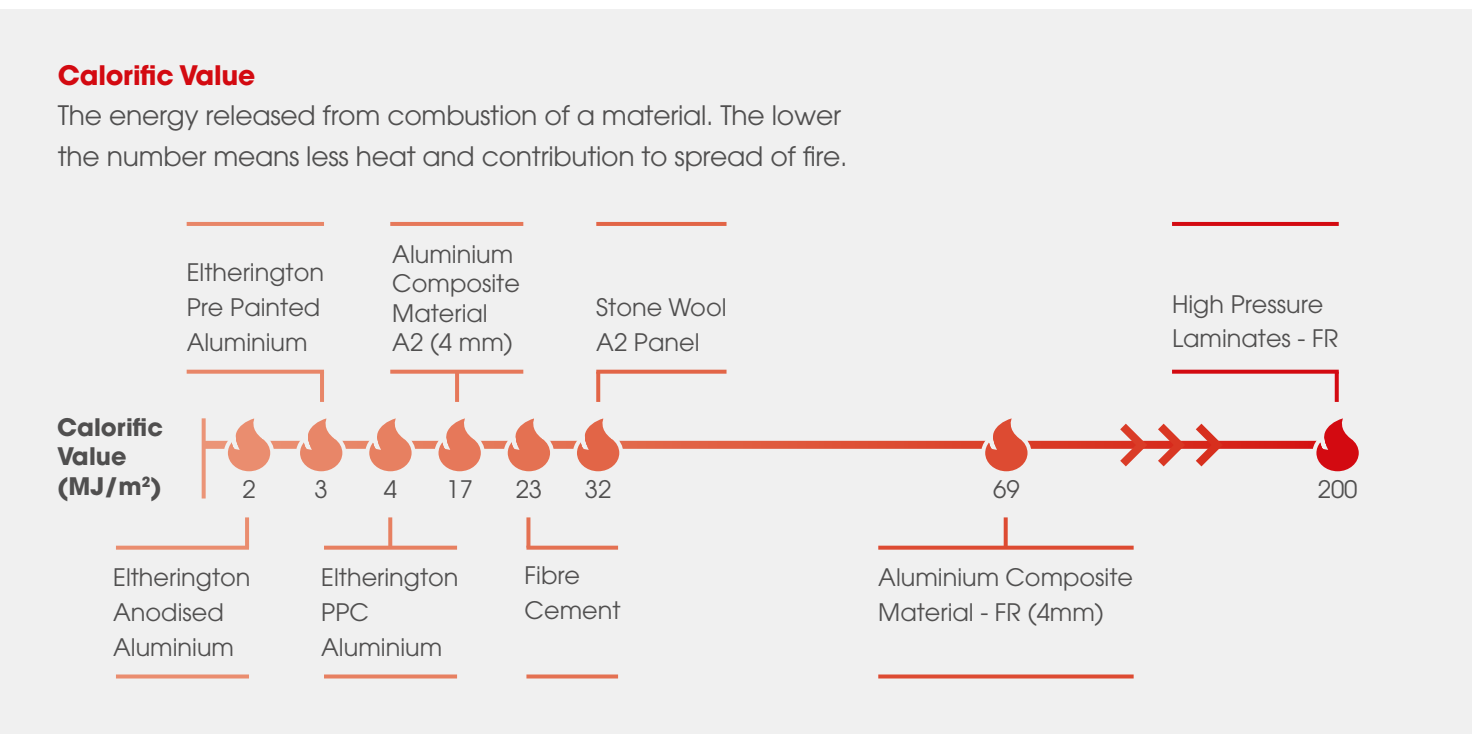


EN 13501-1 standards

EN 13501-1 is a European testing standard for building products, fire classification of construction products and building elements.

Building materials are classified according to their contribution to a fire. Not only are fire properties considered, but also smoke emissions and the possible formation of burning drips.

The reaction to fire properties of powder coated aluminium are A2-s1, d0 which means it is classified as having no or negligible contribution to the fire. In addition, producing little or no smoke, and no burning droplets or particles.



TFS1 fully tested panel

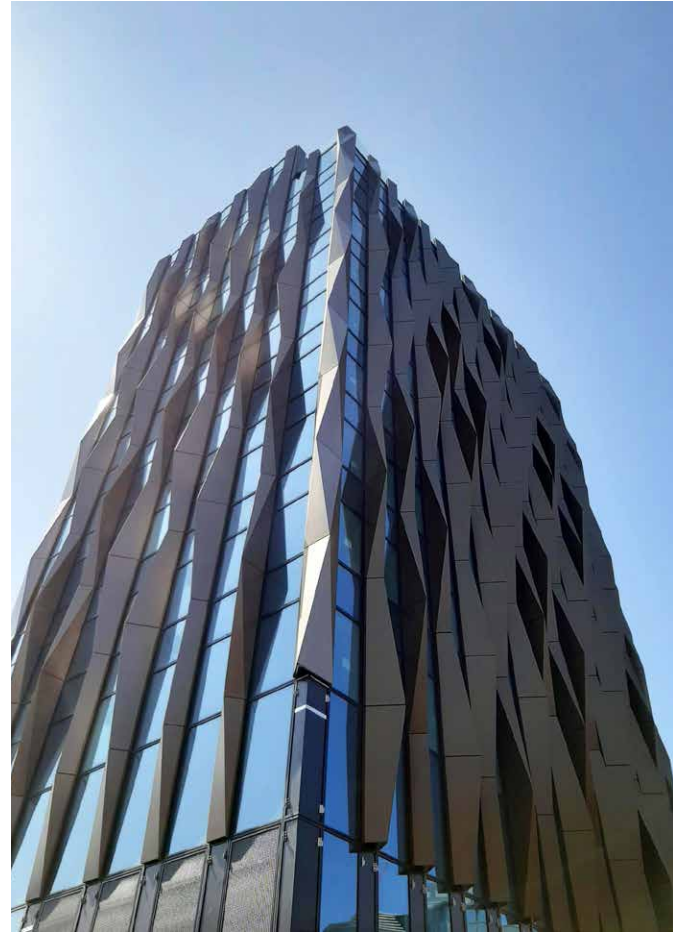
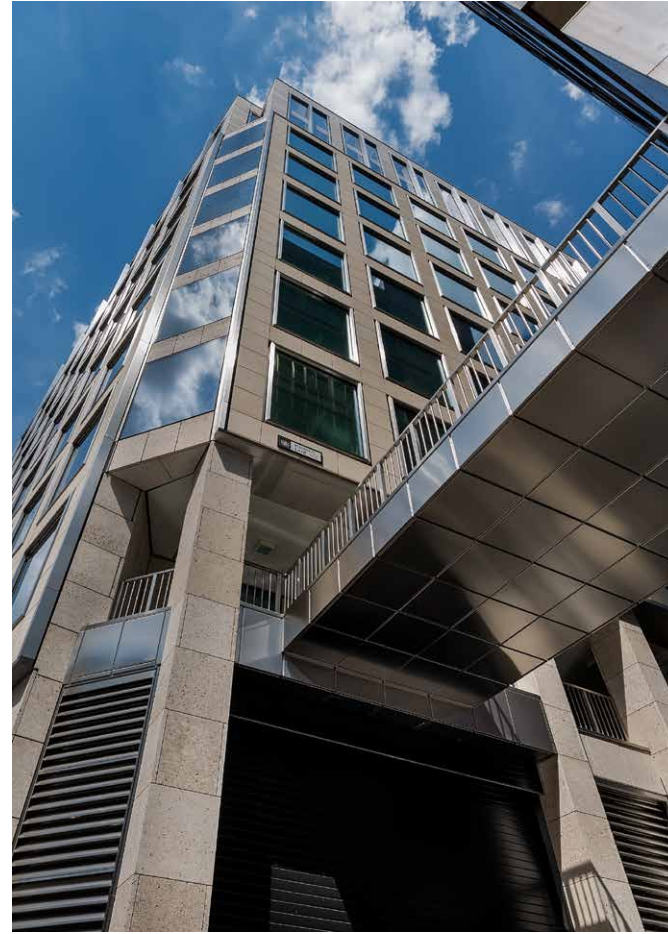
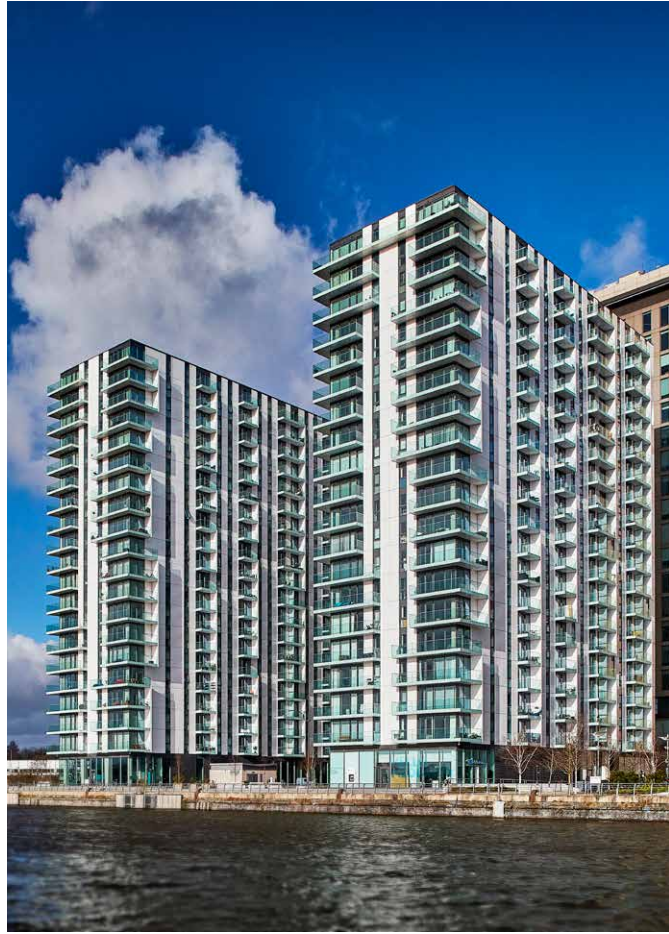
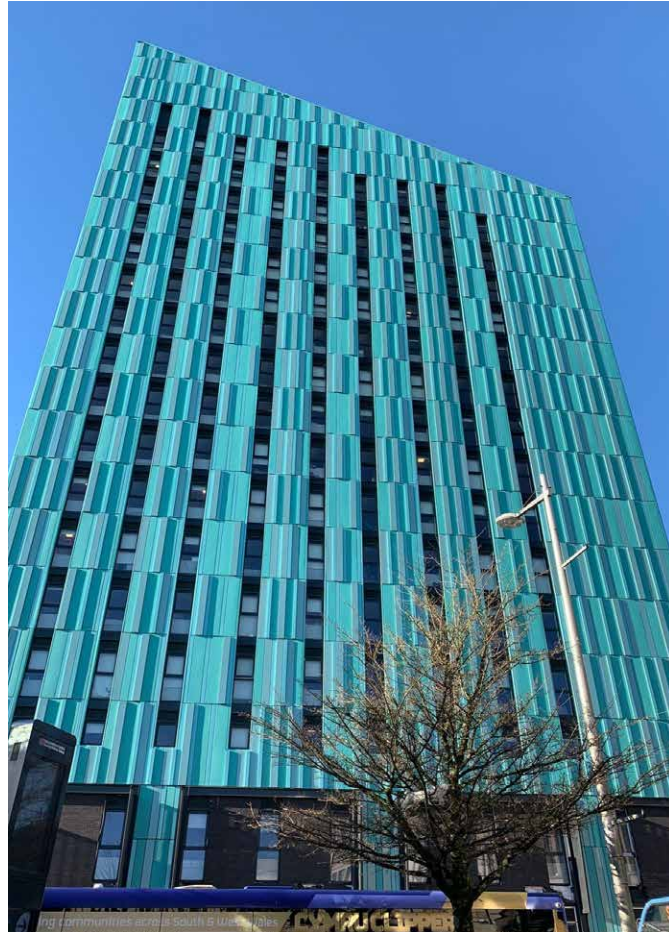
A2, s1, d0 classification of reaction to fire performance in accordance with EN 13501-1: 2018.

15 TO 40 YEARS
PPC WARRANTY

CLASS A2 FIRE
PERFORMANCE

LARGE FORMAT PANELS
4000MM X 1000MM

IMPACT AND
WIND RESISTANT





eltherington
architectural solutions

contact us

Get in touch

T: 01482 320336

F: 01482 329956

E: info@eltherington.co.uk

A: Eltherington Group Ltd,
1305 Hedon Road,
Hull, East Yorkshire,
HU9 5QD

www.eltherington.co.uk