

# Rainscreen Cladding

Secret Fix - SFS1



**eltherington**  
architectural solutions



**Specification guide**

[www.eltherington.co.uk](http://www.eltherington.co.uk)

# SFS1 - Secret Fix System

## About Eltherington Architectural Solutions

Eltherington architectural has been manufacturing façade systems for over 50 years.

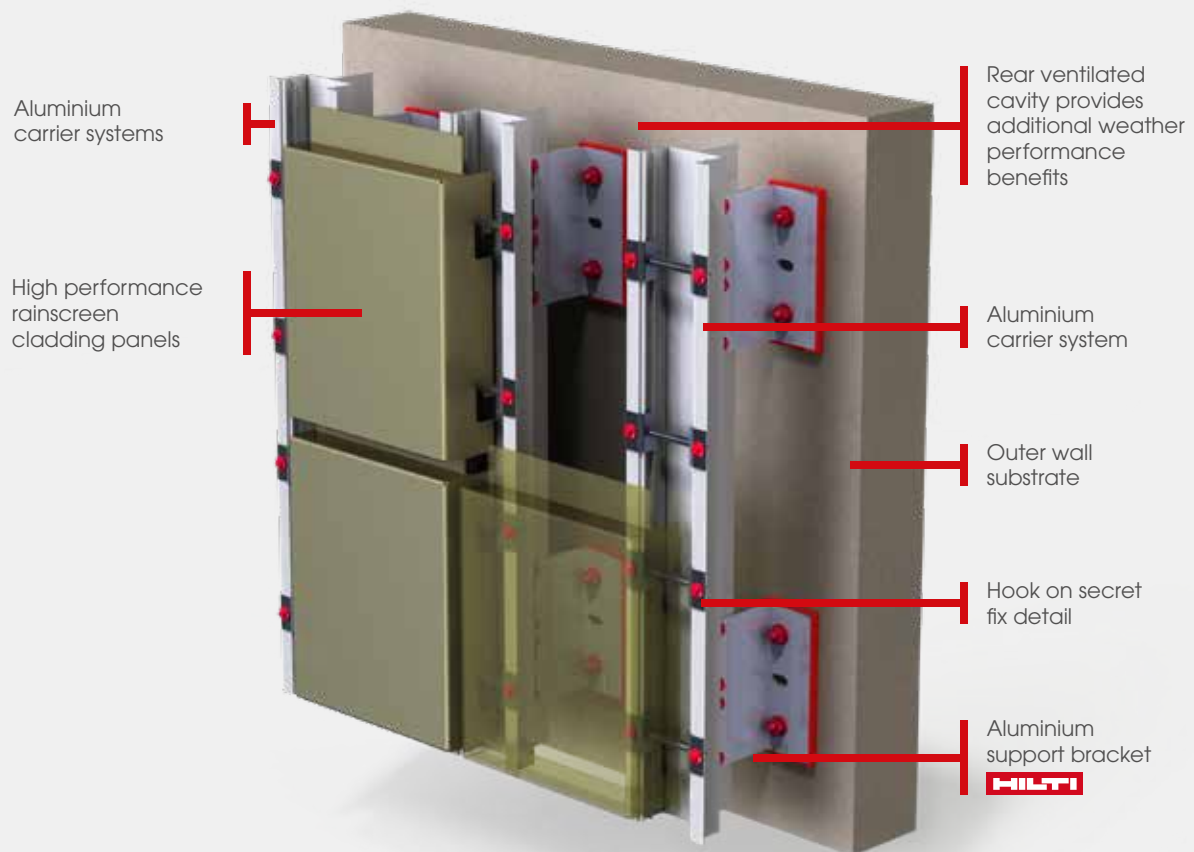
All our rainscreen systems have been independently tested and accredited to the specific requirements of CWCT and come in an unrivalled choice of materials, colours and finishes to help you bring your design to life.

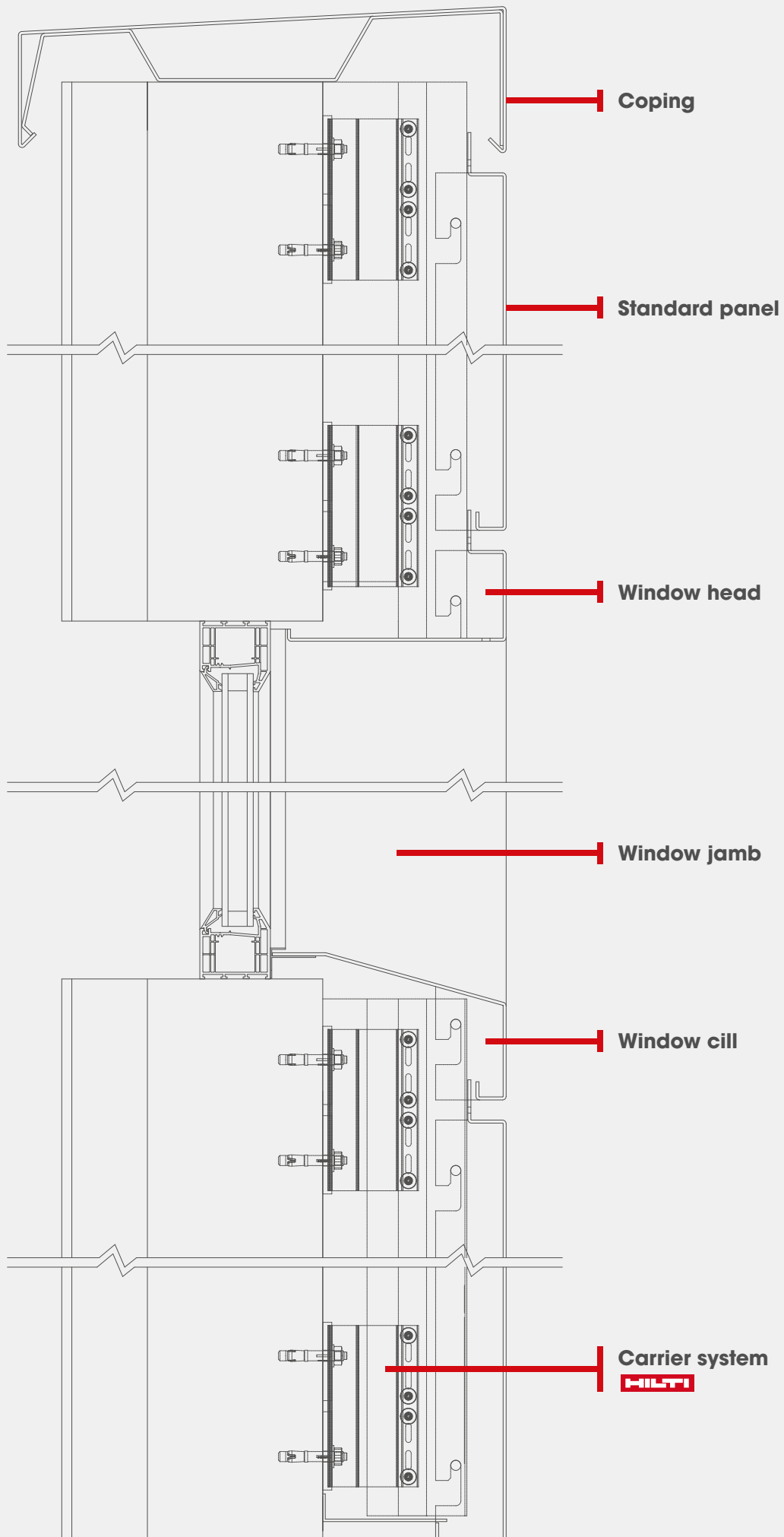
Our state of the art production facility allows us to take on board specialist architectural metal work projects of any scale. We fabricate a wide range of external architectural systems including rainscreen cladding, roofline products, column casings, perforated panels and any bespoke fabrication.

## Specification

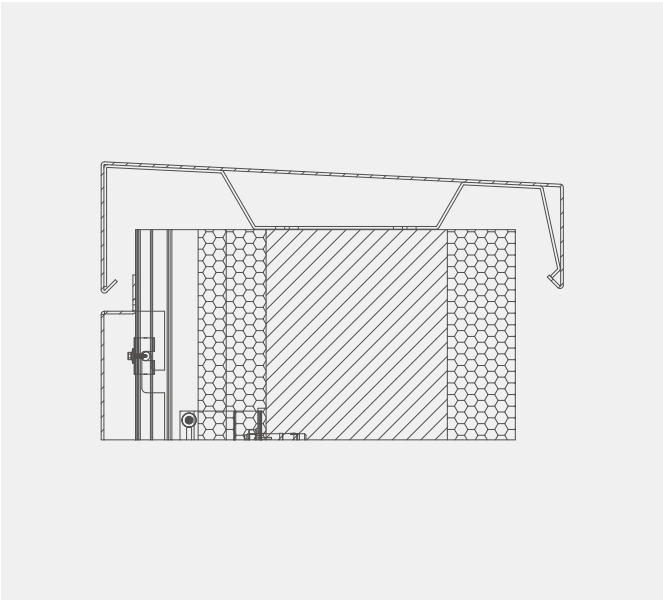
- Panel fire rating - A1 or A2
- Finish - PPC, Pre-paint, Anodised, Corten, Rimex
- Thickness - 2 / 3mm
- Panel size - 1480 x 3850mm max
- Horizontal joint - 20mm
- Fixings - Self drill mechanical fixing
- Rail centres - 750mm max
- Install method - 1st & 2nd fix layout
- CWCT tested with Hilti-Eurofox

## Typical Installation

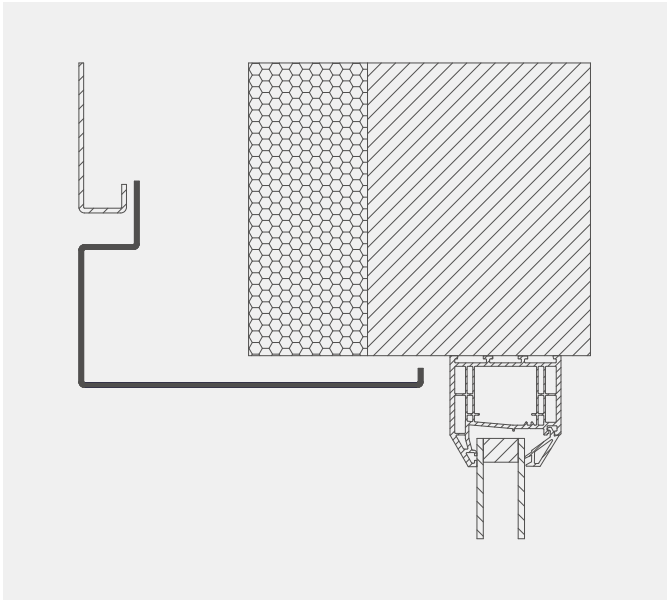




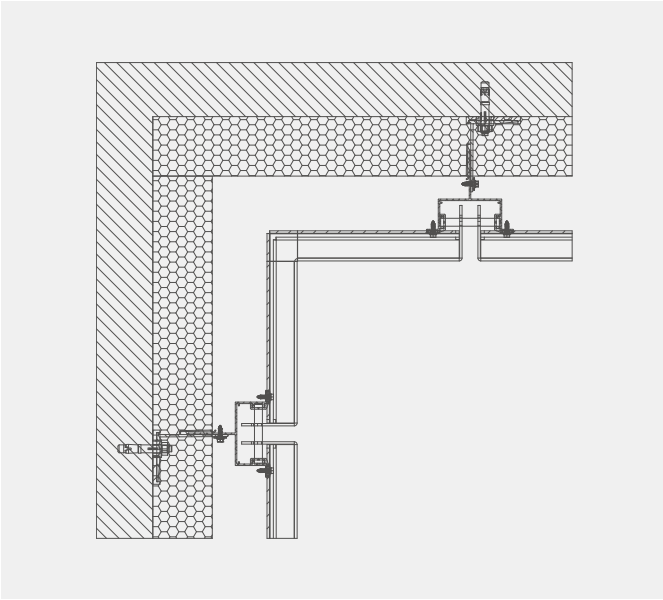
**Coping detail**



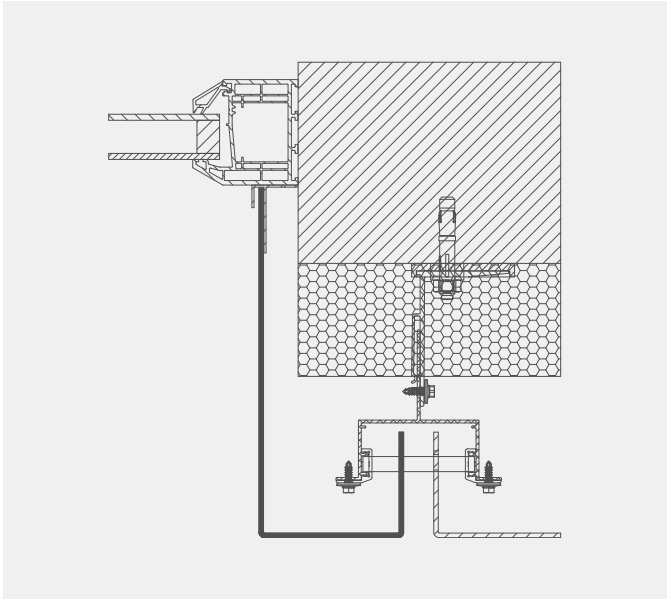
**Window head detail**



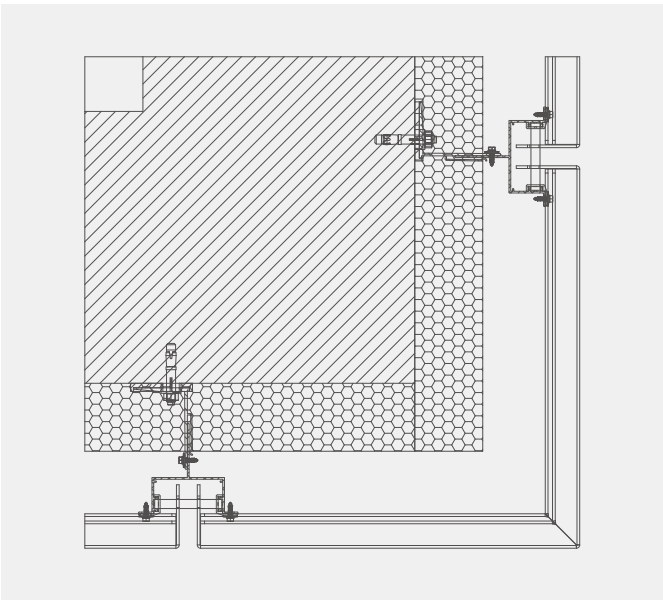
**Internal corner detail**



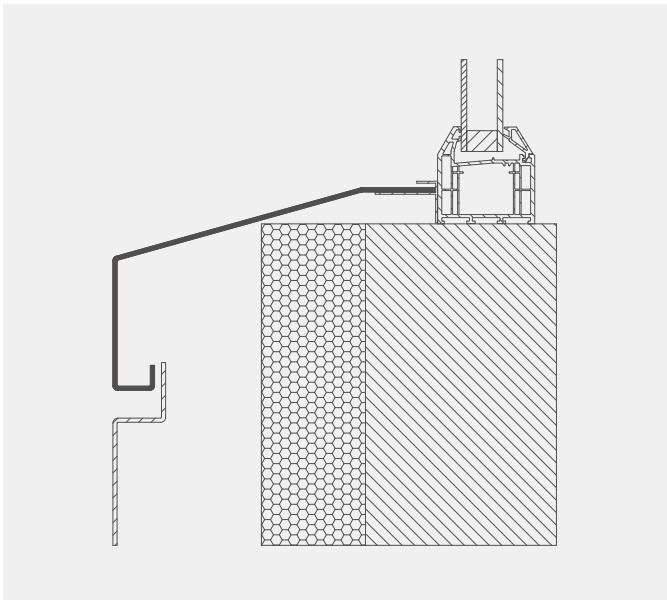
**Window jamb detail**



**External corner detail**

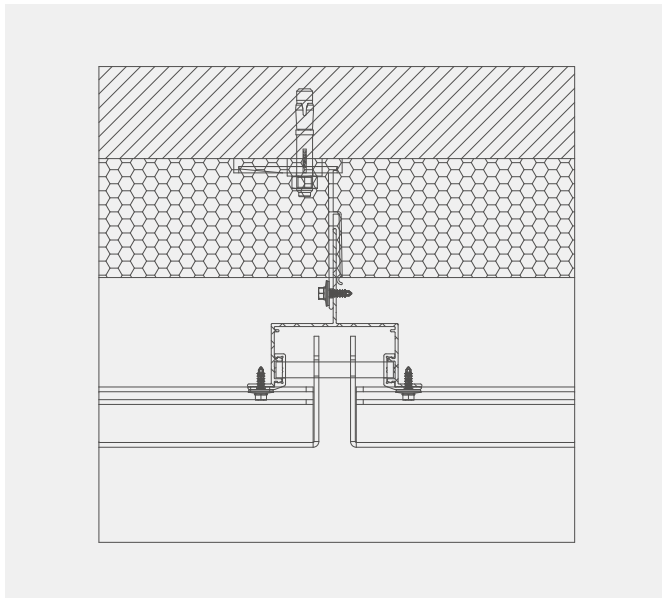


**Window cill detail**

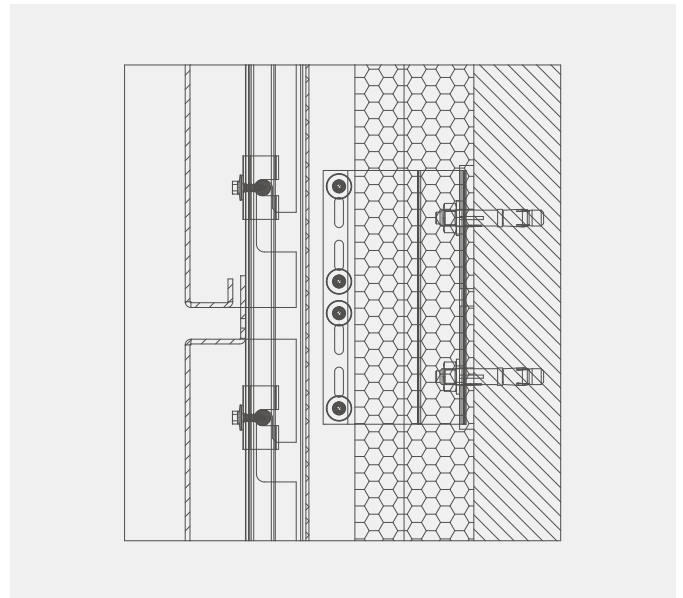




**Vertical joint detail**

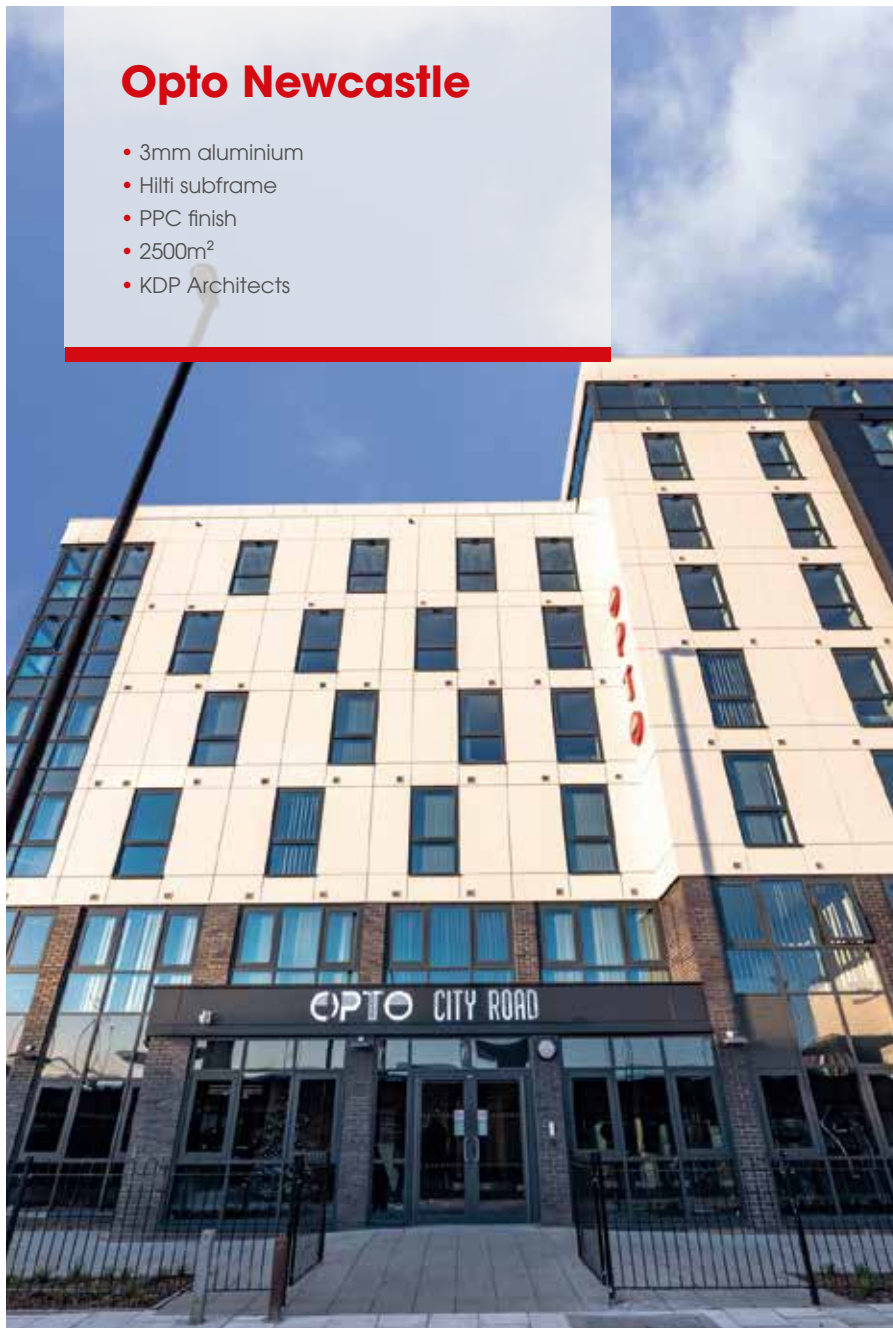


**Horizontal joint detail**



## Opto Newcastle

- 3mm aluminium
- Hilti subframe
- PPC finish
- 2500m<sup>2</sup>
- KDP Architects



# Rainscreen Fire Ratings to EN13501-1

Definition	Product Name	Material	Manufacturer
<b>A1 NON-COMBUSTIBLE</b>	CoreClad A1	Aluminium	Eltherington
	Anodised	Aluminium	Eltherington
	Rimex various	Steel	Rimex
	Corten	Steel	Corten
	Alpolic A1	ACM	Alpolic
	PVDF	Aluminium	Arconic
<b>A2</b>	PPC	Aluminium	Eltherington
	Alucobond A2	ACM	Alucobond
	Alpolic A2	ACM	Alpolic

## The Complete Rainscreen Solution by **HILTI** - Eltherington

Design →	Measure →	Brackets →	Fixing brackets →	Mounting insulation →	Firestop →	Profiles & alignment →	Rainscreen cladding →

### Other CWCT tested rainscreen cladding systems and designs:

<b>TFS1</b> Through Fix System	<b>EPS</b> Extruded Plank System
<b>SFS1</b> Secret Fix System	<b>CS</b> Castellation System
<b>CPS</b> Clip Plank System	<b>P1</b> Perforated
<b>IPS</b> Interlocking Plank System	<b>3D</b> 3D Domed



### Contact Us

**T:** 01482 320336

**F:** 01482 329956

**E:** [info@eltherington.co.uk](mailto:info@eltherington.co.uk)

**A:** Eltherington Group Ltd,  
1305 Hedon Road,  
Hull, East Yorkshire, HU9 5QD

[www.eltherington.co.uk](http://www.eltherington.co.uk)



**eltherington**  
architectural solutions