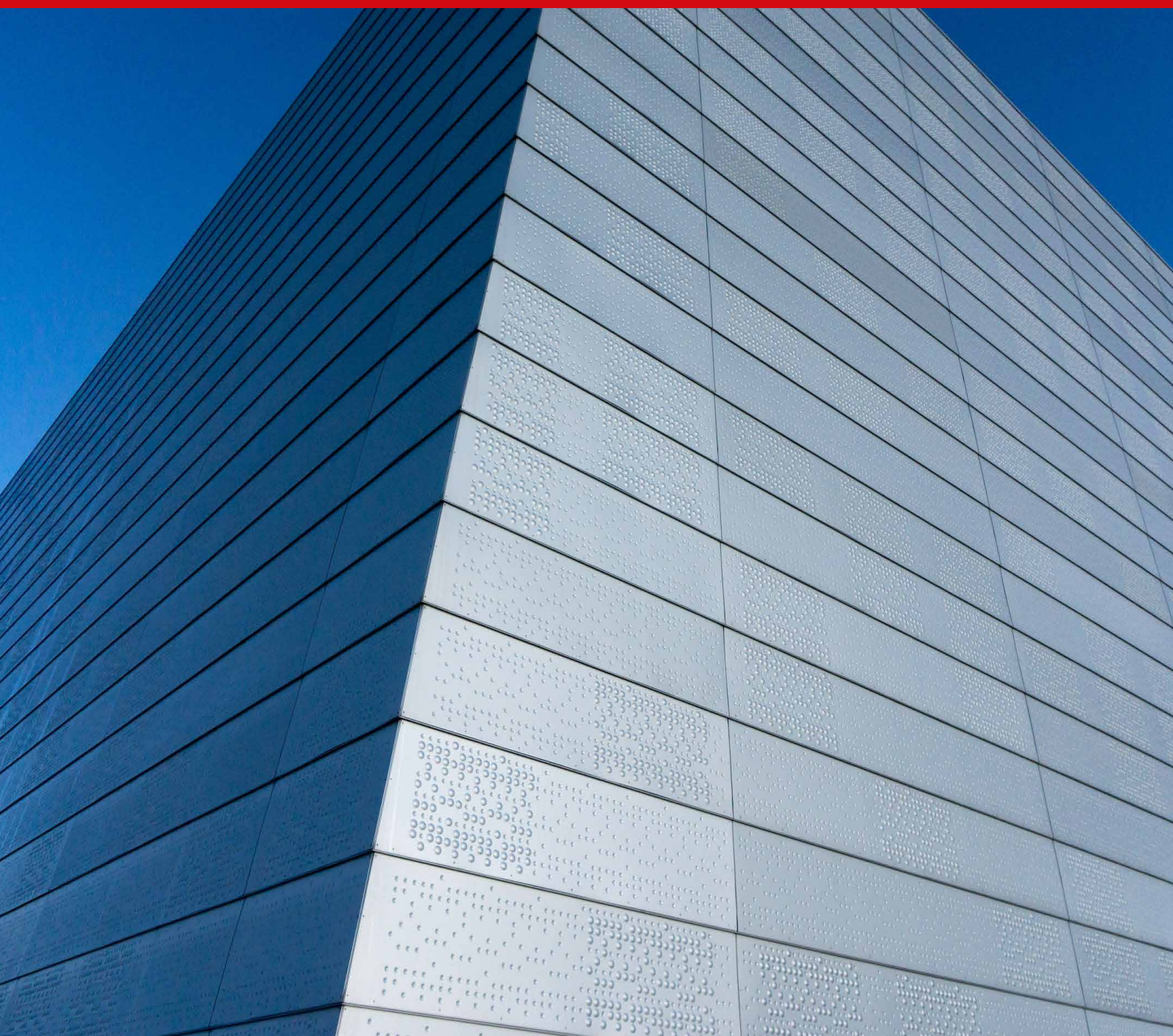


Rainscreen Cladding

3D Domed System



eltherington
architectural solutions



Specification guide

www.eltherington.co.uk

3D - 3D Domed

About Eltherington Architectural Solutions

Eltherington architectural has been manufacturing façade systems for over 50 years.

All our rainscreen systems have been independently tested and accredited to the specific requirements of CWCT and come in an unrivalled choice of materials, colours and finishes to help you bring your design to life.

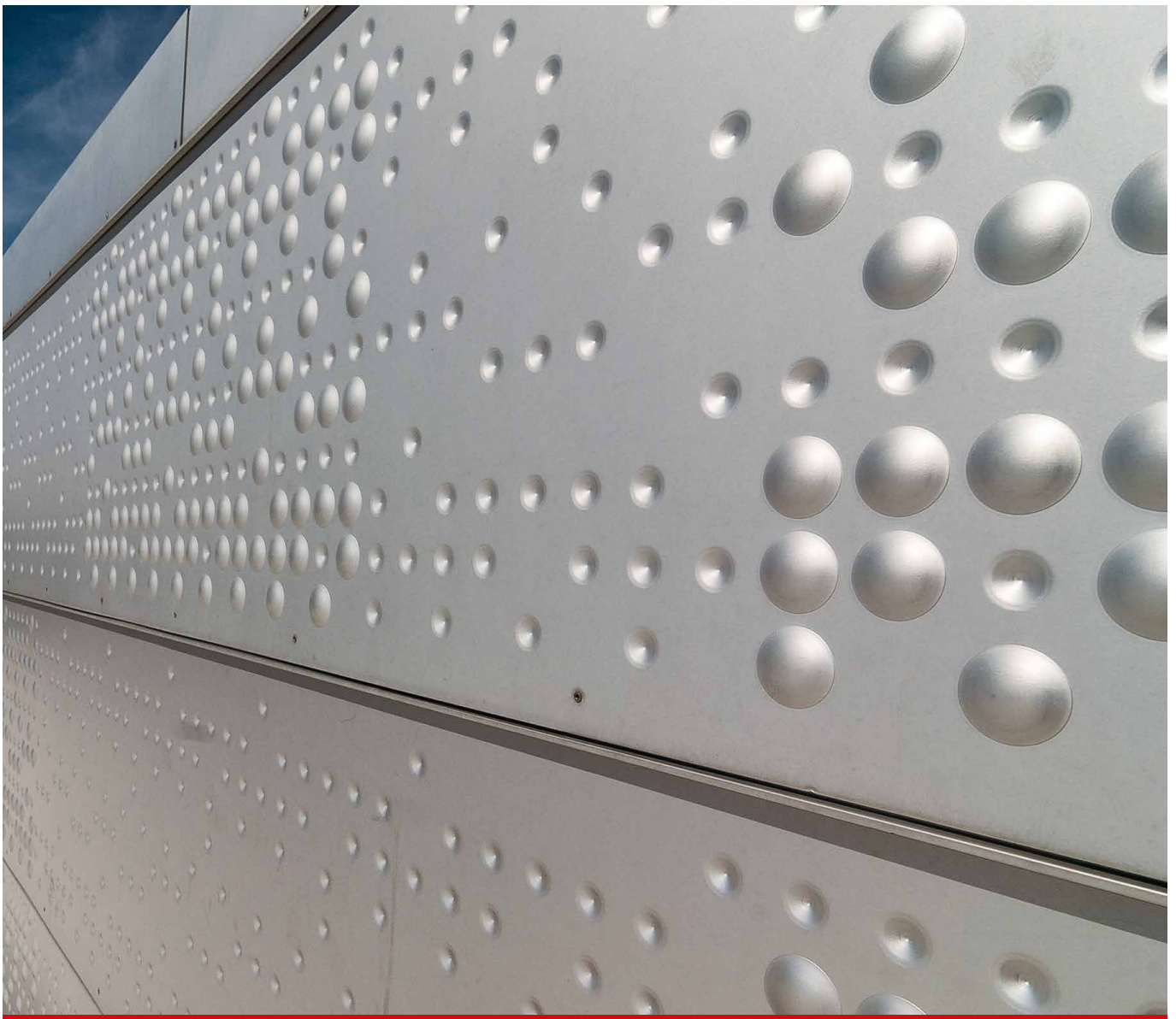
Our state of the art production facility allows us to take on board specialist architectural metal work projects of any scale. We fabricate a wide range of external architectural systems including rainscreen cladding, roofline products, column casings, perforated panels and any bespoke fabrication.

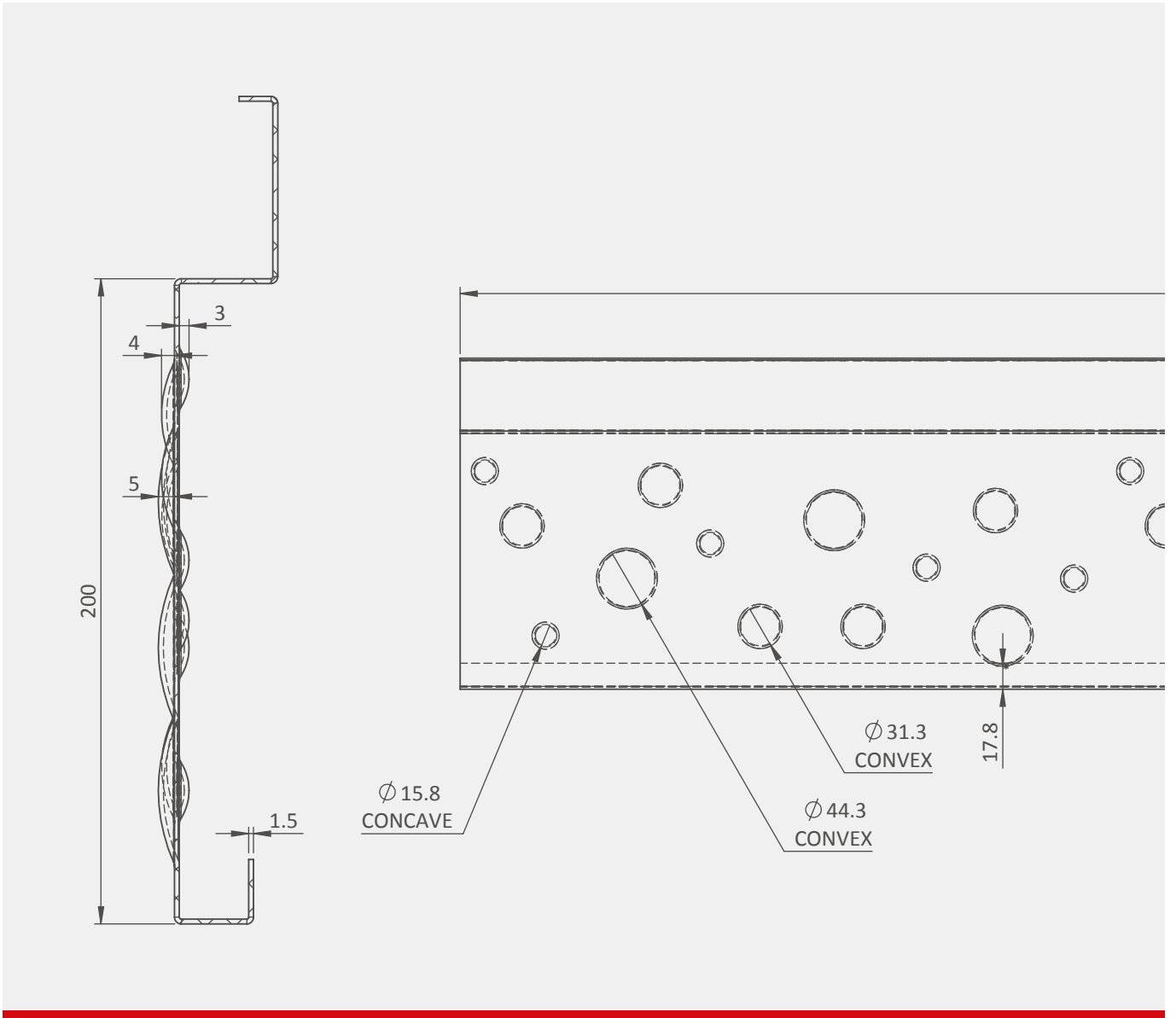
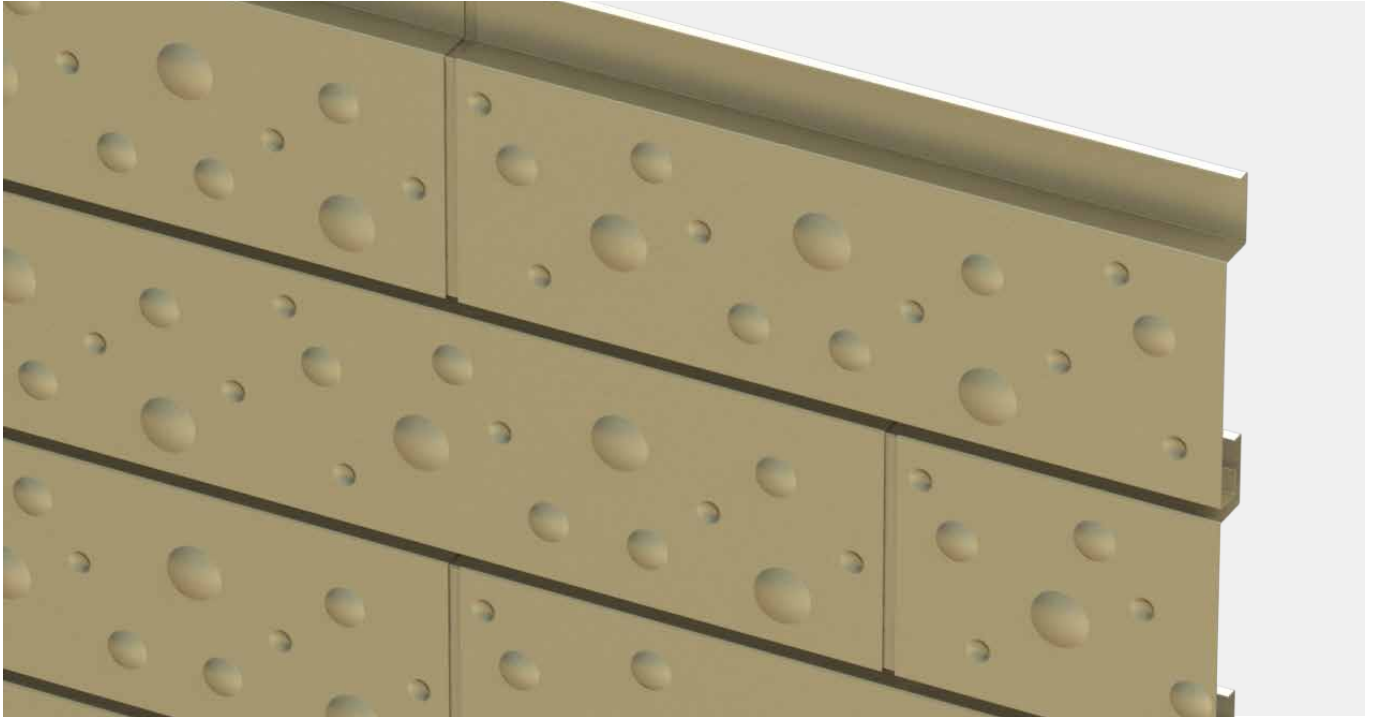
Specification

We are able to offer a range of 3D finish options to provide many unique and innovative creative solutions.

Within our CNC punch facility, we have numerous punch tools for 3D designs, either convex or concave. We are also able to offer full panel 3D solutions resulting from coil processing. We have the following emboss patterns: Stucco, Hammered, Cedar Woodgrain, and Alugrain.

An additional benefit of embossing is the material work hardening properties resulting from the embossing process to provide a much stronger panel solution.





Rainscreen Fire Ratings to EN13501-1

Definition	Product Name	Material	Manufacturer
A1 NON-COMBUSTIBLE	CoreClad A1	Aluminium	Eltherington
	Anodised	Aluminium	Eltherington
	Rimex various	Steel	Rimex
	Corten	Steel	Corten
	Alpolic A1	ACM	Alpolic
	PVDF	Aluminium	Arconic
A2	PPC	Aluminium	Eltherington
	Alucobond A2	ACM	Alucobond
	Alpolic A2	ACM	Alpolic

The Complete Rainscreen Solution by **HILTI** - Eltherington

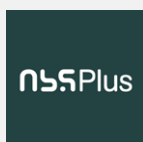
Design →	Measure →	Brackets →	Fixing brackets →	Mounting insulation →	Firestop →	Profiles & alignment →	Rainscreen cladding →

Alternative design options by Eltherington Architectural:

P1 Perforated



CS Castellated System



Contact Us

T: 01482 320336

F: 01482 329956

E: info@eltherington.co.uk

A: Eltherington Group Ltd,
1305 Hedon Road,
Hull, East Yorkshire, HU9 5QD

www.eltherington.co.uk



eltherington
architectural solutions